

TECHNICAL DATA SHEET

WTR-8000

Wi-Fi THERMOSTAT



Index

Product details.....	1
----------------------	---

WTR-8000 Wi-Fi THERMOSTAT

The WTR-8000 Warmset Wi-Fi thermostat is specially designed for floor heating systems remote control and allows accurate temperature regulation for significant energy savings.

The simple line make it an object that is well coordinated with modern and design home furnishings. It is possible to control the thermostat by an easy app for smartphone. It also adds other convenient features such as holiday mode, ECO or antifreeze.

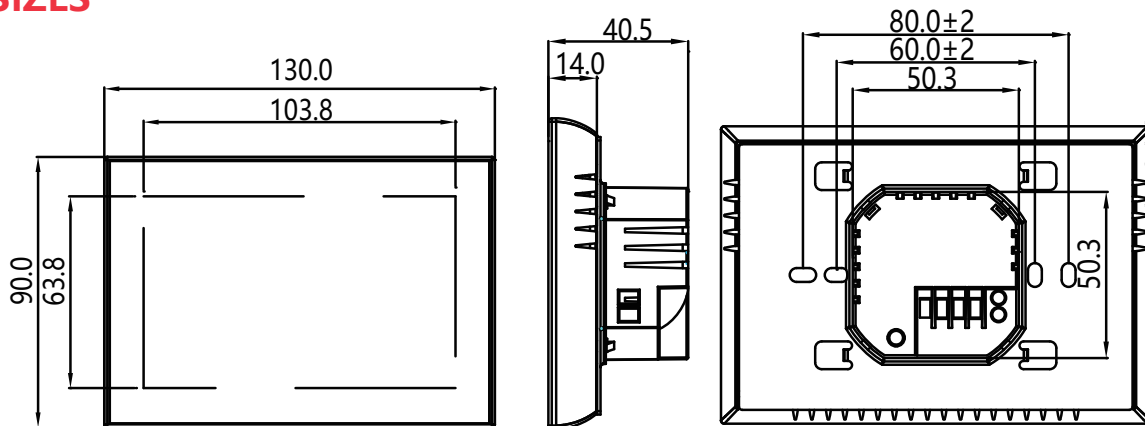
Two colors are available, white and black.



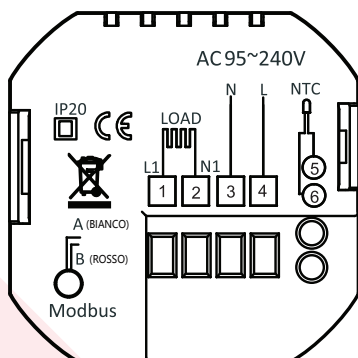
SUPPLY	230VAC (120VAC OPTIONAL)
SENSORS	1 TEMPERATURE PROBE
OUTPUT	1 X SWITCH RELAY(R1)
LOAD CAPACITY	MAX 16A
ROOM TEMPERATURE	-5 °C ~ +45 °C
HUMIDITY RH	0~95%
ACCURACY	+/- 1 °C FOR +20 °C
DIMENSION	120x80x20 mm (L X H X P) - Horizontal
BACKLIGHT DURATION	5,000 Hours
BATTERY TYPE	CR 1220 (Just for clock backup)
BATTERY DURATION	> 5 YEARS
PROTECTION RATING	IP30

WTR-8000 Wi-Fi THERMOSTAT

SIZES



CONNECTION



APP TO MANAGE THE THERMOSTAT

The APP with which it is possible to manage the thermostat can be downloaded from AppleStore or GooglePlay by following the QR codes shown below

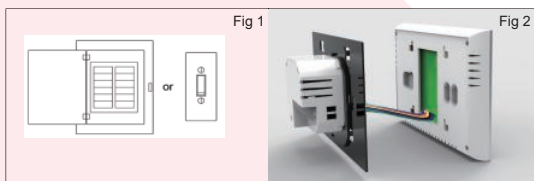


IOS

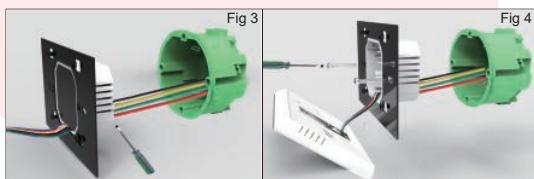


Android

INSTALLATION



Step 3. Connect power, load into appropriate terminals (see "Wiring" for details and Fig 3).
Step 4. Fix the mounting plate to the wall with screws.



Step 5. Fix the thermostat body and mounting plate by twisting. See figure 5.
Step 6. Installation complete. See figure 6.

