

# *TECHNICAL DATA SHEET* **WALL HEATING PANEL**



## **Index**

Product details.....	1
Dimension and characteristics.....	2
Colors.....	3

## WALL HEATING PANEL



Warmset's panel heaters are an elegant heating solution essentially composed of a metallic casing in which **Warmset's unique, patented technology** is installed. The small thickness of the heating element, together with its excellent adhesion to the conductive metallic shell, **guarantee excellent** heat spread and **energy efficiency** that can heat closed areas up to 8 m<sup>2</sup> with just one panel. The flat and linear contour make for an elegant **designer radiator** suitable to all environments, from the living room to the bathroom, from the dining room to the bedrooms.

With its **electric heating system** that transmits heat in a uniform manner over the entire surface, the Warmset panel ensures a comfortable feeling without creating layers in the air. As opposed to heat convection which heats and moves the air or thermal conduction which heats by contact, **thermal radiation** is like the heat from the sun: it heats things and people inside an environment, generating the best **sense of well-being** perceived by the human body. Without flows of air (and therefore of dust) and electromagnetic emissions, the **environment is healthy** and absolutely comfortable for the people who live in it.

*\* Note: 8 m<sup>2</sup> calculated on Class B/C energy efficiency for the casing*

### CERTIFICATIONS



# DIMENSIONS AND CHARACTERISTICS

## WALL HEATING PANEL

### Customizable Print

Warmset's panel heaters are **completely customizable** with writing, logos or images. The personalization based on the customer's needs can be done with sticker, paint or sublimation techniques.

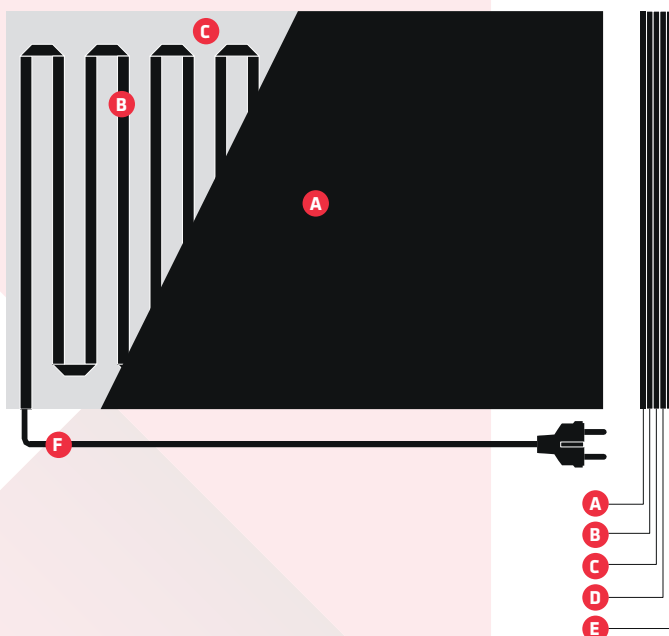
### Easy Assembly

Thanks to a simple mechanism of brackets and magnets, in just a few steps the system is fixed safely and rapidly.

## Dimensions and power

DIMENSIONS	900X600X13 MM
POWER	400W
AMPERE	1,8A - 230VAC
SURFACE TEMPERATURE	AMBIENT WITH 20 °C - 80-90°C

## Structure



- A** IRON PAINTED PLATE
- B** HEATING SYSTEM
- C** ALUMINIUM TAPE
- D** TNT INSULATION
- E** PANEL BASE
- F** POWER CORD

# **COLORS** *WALL HEATING PANEL*

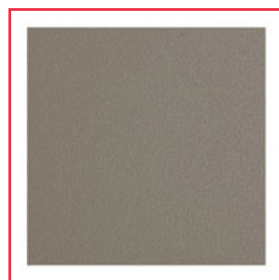
## ***Basic line***



*WHITE*



*SANDY*



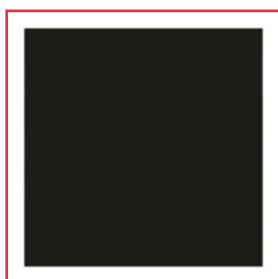
*GREY*



*PEWTER*



*CORTEN*

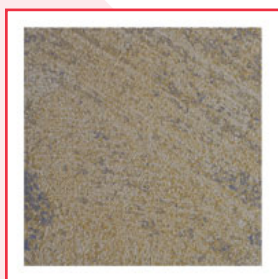


*BLACK*

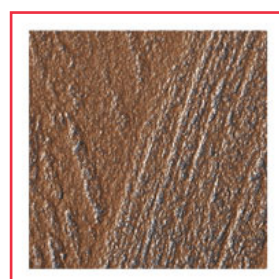
## ***Spatolata Line***



*SILVER*



*GOLD*



*QUARTZ*



*COPPERY*